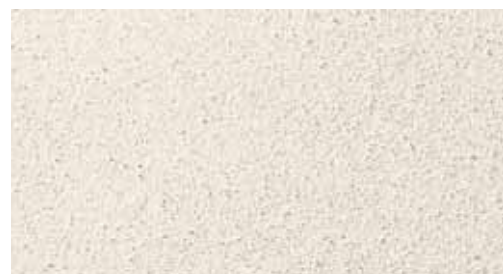


KEIM Universalputze



**The tried and tested all-round renders
for all kinds of substrates**



Damaged render, difficult substrates etc.

Difficult substrate situations in renovation fields

It is especially in renovation jobs that we are not infrequently faced with substrate problems which cannot be solved or are not best solved with coatings alone. Whether in exterior or interior areas, perfect coating substrates are a rare occurrence. First of all, there are numerous different shortcomings in or even damage to the render. The commonest types of damage include spreading cracks, loss of pointing between masonry and flaking of the render. However, many other "difficult" substrates are frequently encountered in practice. Uneven rendered surfaces, differences in texture due to partial repairs to the render, excessively coarse or excessively fine surface textures, chemically stripped surfaces, mixed substrates of all kinds, unattractive concrete surfaces or fair-faced masonry, uneven transitions to adjacent surfaces – the list could go on.

KEIM Universalputz and KEIM Universalputz-Fine, both thin layer renovating renders based on lime cement, are technically mature, durable and economic renovation solutions to all these problems. Simply applying one of these two all-round renders from KEIM, if necessary with embedded mesh, onto a sound existing substrate provides a perfect surface and an ideal base for subsequent coating. In addition, this is considerably simpler and more efficient than laborious partial repairs or costly replacement of the entire render structure. The result is a perfect substrate for subsequent coating which is ideally suitable even for pure silicate paints such as KEIM Purkristalat.

Note:

A structural engineer must always be consulted where there is structurally significant cracking. The KEIM Porosan Sanierputz system is the ideal solution to salt and moisture damage.

KEIM Universalputze: for durable and economic solutions

KEIM Universalputze

- efficient and economical
- excellent adhesion
- versatile finishes
- fibre reinforced



1 Manual application of render



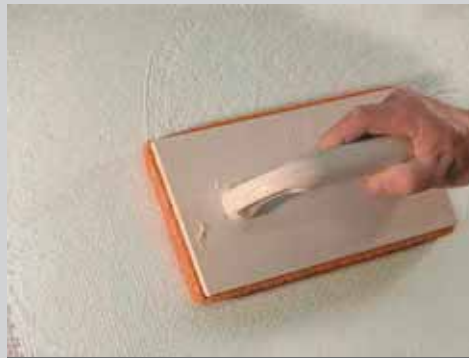
1 Manual application of render



2 Optional placement of mesh



3 Smoothing



4 Rubbing in with coarse sponge float



5 Felt-floating with fine sponge float

KEIM Universalputz: »A render for all reasons«

Suitable for universal use

KEIM Universalputz and KEIM Universalputz-Fine are the solution for just about every substrate problem. Whether inside or out, whether renovating existing buildings, preserving historic monuments or constructing new buildings, whether covering mineral, organic or mixed substrates or concealing cracks, flaking or differences in texture, after a thorough clean and any other preparatory work that may be necessary, these two renovating thin layer renders, with their grain sizes of 1.3 mm and 0.6 mm respectively, can be applied very simply and generally without primer to virtually any sound substrate.

If the substrate has been affected by algae, it should be pretreated with KEIM Algicid-Plus.

Simple and reliable to use

These all-rounders are as easy and reliable to apply as they are flexible: their outstanding machine processability with excellent stability and particularly smooth, thick consistency make KEIM

Universalputz and Universalputz-Fine particularly pleasant and quick to apply.

Fiber reinforcement and water-repellency ensure reduced susceptibility to cracking and the best possible wear resistance.

These renovation renders have a trick or two up their sleeves when it comes to appearance because they can be felt-floated or also differently textured. When felt-floated, Universalputz-Fine closely resembles lime render. The render's light color is another plus point.

Versatile finish

Product data

KEIM Universalputz:
Normal render mortar CS III
Grain size: 1,3 mm
Consumption approx. 1,1 kg/m²/mm
Layer thickness: 4 - 10 mm/layer

KEIM Universalputz-Fine:
Normal render mortar CS III
Grain size: 0,6 mm
Consumption approx. 1,2 kg/m²/mm
Layer thickness: 4 - 8 mm/layer



KEIM Universalputz, felt-floated



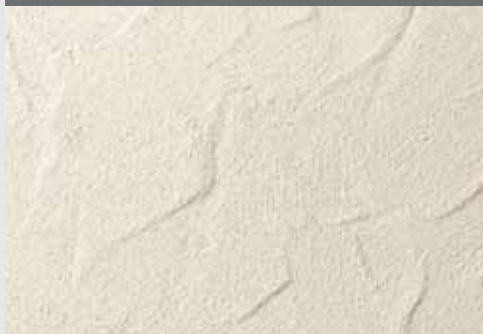
KEIM Universalputz-Fine, felt-floated



KEIM Universalputz, textured



KEIM Universalputz-Fine, textured



The most important features in brief:

- *simple – reliable – economic*
- *mineral renovation finishing renders, lime cement based with 1.3 mm and 0.6 mm grain size*
- *compressive strength > 3.5 N/mm² (normal render mortar CS III)*
- *fiber reinforced and water-repellent*
- *usable in any application without priming*
- *outstanding machine processability*
- *particularly smooth to apply*
- *light color*
- *versatile finishes*