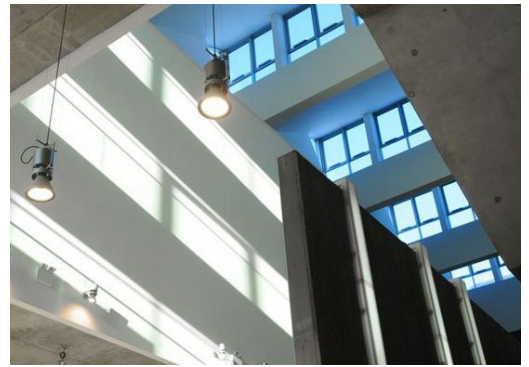
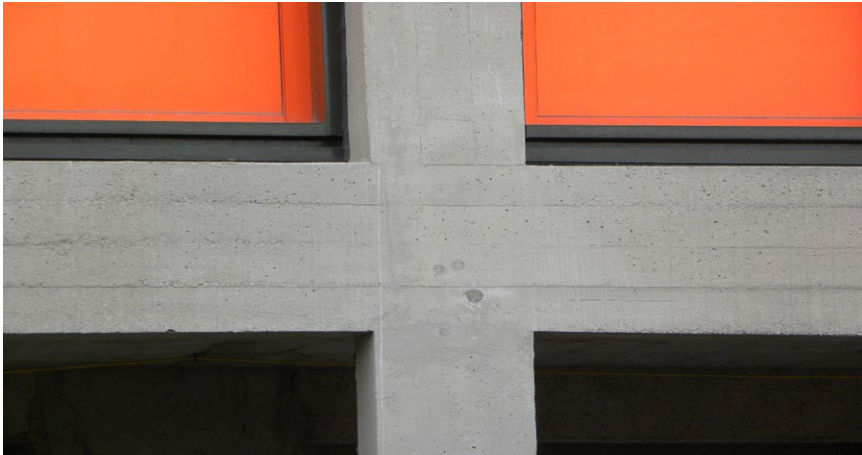


KEIM Concretal Lasur



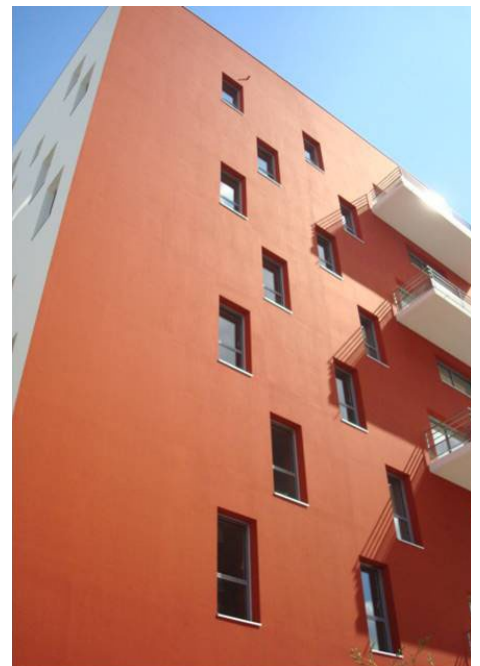
Think Concrete, Think Keim
Keim Concretal Lasur - Colour and protection for concrete



Keim Concretal Lasur

Keim Concretal Lasur is generically similar to other Keim sol silicate paint systems comprising a water borne potassium silicate paint binder, inorganic mineral fillers (mainly Feldspar) and inorganic natural earth oxide colour pigments that do not fade and are UV stable.

When applied to a concrete substrate the paint binder forms a microcrystalline chemical bond with it. This silicate structure is highly stable and resists attack from strong acids and alkalis.





Keim Concretal Lasur

The crystalline structure maintains a very high surface vapour permeability allowing the concrete substrate to breathe. The bonding, structure and characteristics of Keim Concretal Lasur give rise to the proven long term performance synonymous with the Keim silicate paint system.

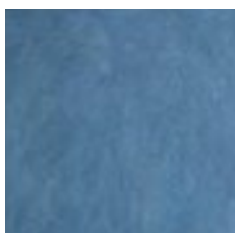
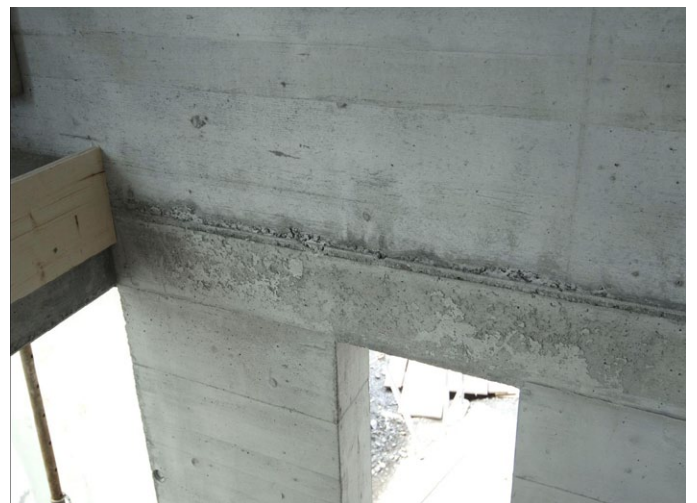
By varying colour and degree of opacity to suit a particular substrate it is possible to achieve dedicated solutions for individual projects.





Keim Concretal Lasur

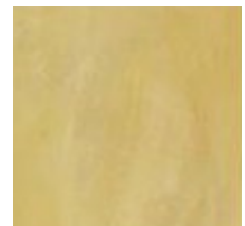
Keim Concretal Lasur is a low pigmentation colour wash available in a wide range of colours and shades. It acts as a stain that penetrates and bonds to the surface of concrete, equalising colour variations whilst maintaining the structure and appearance of concrete.

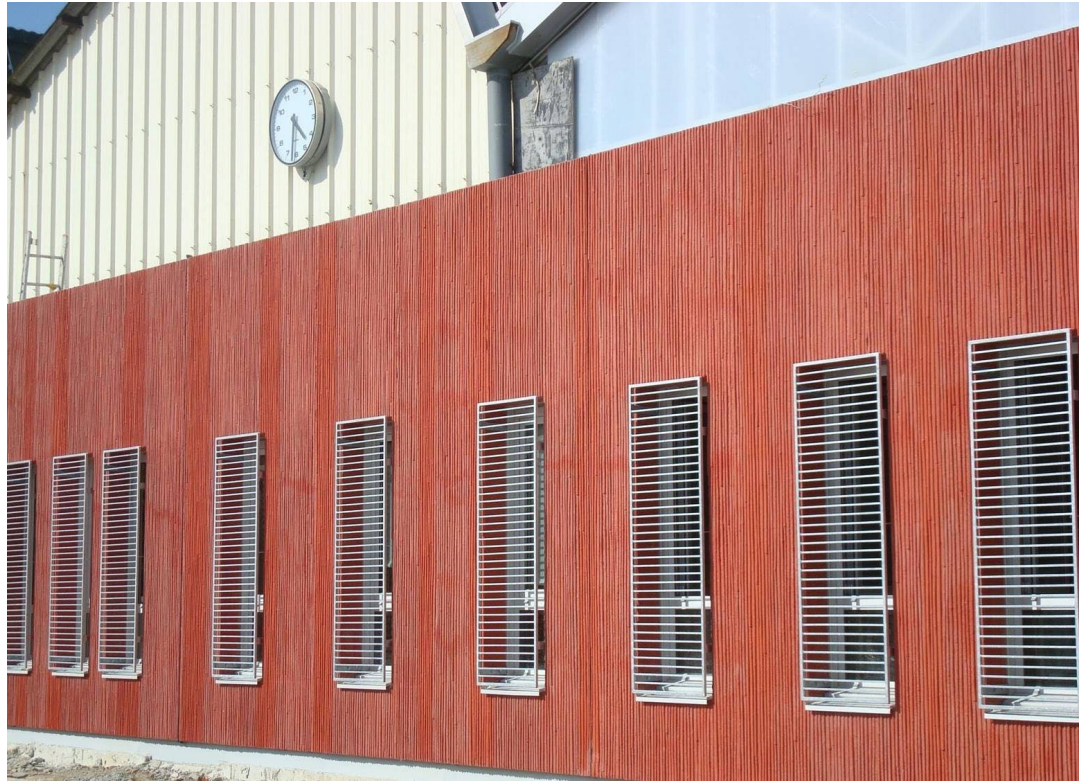




Keim Concretal Lasur

Concrete substrates can exhibit wide variations in both colour and shading resulting from factors such as different rates of hydration, different types of shuttering, varying rates of pour and inconsistency of materials. Add to this the need to undertake localised repairs, the resultant visual appearance can vary considerably from both the original concept and/or approved sample elements. The use of Keim Concretal Lasur enables specifiers and contractors to overcome these potential problems and to achieve concrete surfaces with a consistent quality appearance.



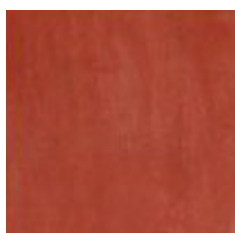


Keim Concretal Lasur

Keim Concretal Lasur is a unique product, offering protection against weathering and chlorides with inherent water repellence and breathability.

Keim Concretal Lasur equalises unacceptable variations in colour and texture of concrete, hides unsightly repairs, reduces surface dusting and increases light reflectivity.

Keim Concretal Lasur is available in a wide range of colours and degrees of opacity, and is tailored to individual requirements.



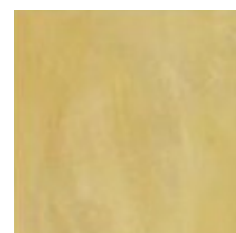
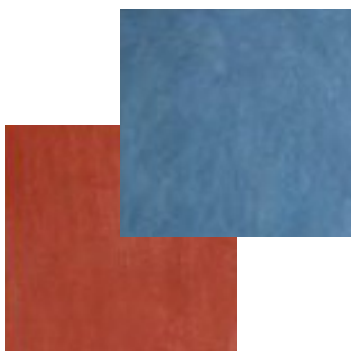


The Keim Concretal Lasur System

Keim Concretal Lasur: Low pigmentation silicate based stain coating for use on all forms of cementitious substrate.

Keim Concretal Dilution: Liquid silicate binder used to dilute Keim Concretal Lasur. May be used neat as a primer coat to reduce high surface porosity.

Keim Concretal Base: Sol silicate based pigment free additive for Concretal Lasur. The desired degree of transparency is achieved by adding the corresponding quantity of Concretal Base to Concretal Lasur.





Key Features and Benefits:

- **Equalisation of repaired or fair-faced concrete with an uneven appearance**
- **Good water-repellency**
- **Consolidation of concrete surface**
- **Elevated protection from weathering and wear**
- **Absolutely lightfast and UV resistant**
- **Minimal soiling**
- **Retains original concrete appearance**
- **Mineral matt surface**
- **Concrete colour can be matched**

KEIM MINERAL PAINTS LTD

Santok Building
Deer Park Way, Donnington Wood
Telford, Shropshire TF2 7NA
Tel. 01952 231250
Fax. 01952 231251

KEIM MINERAL PAINTS LTD **simply mineral**

www.keimpaints.co.uk
sales@keimpaints.co.uk